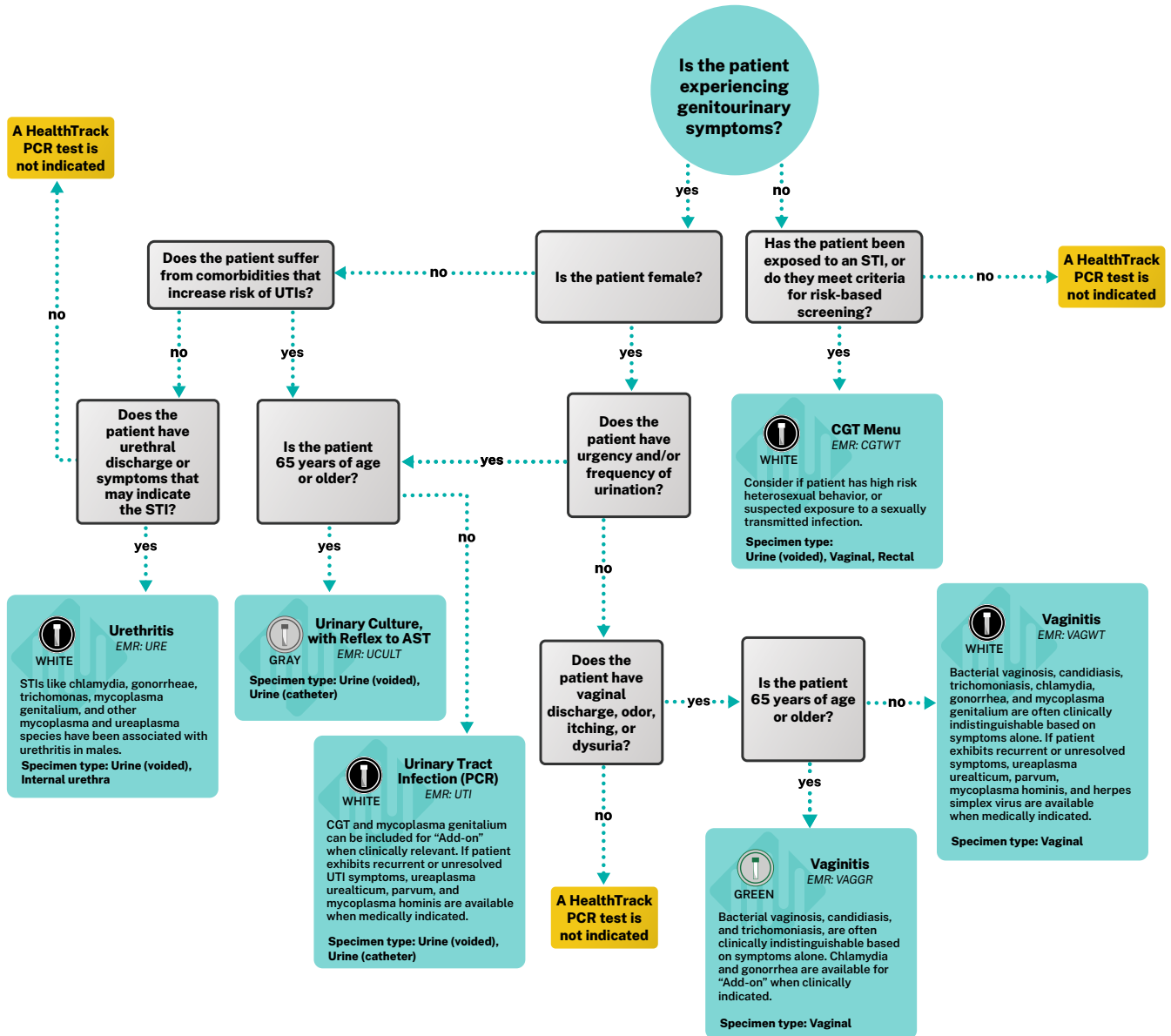




GENITOURINARY INFECTION Menu Selection Guide

May 2026



Interpreting Urinalysis Results ¹	Leukocyte Esterase Nitrite	Sensitivity - 79%	Specificity - 87%
		Sensitivity - 49%	Specificity - 98%

How to select the right sample type for your patient:

Female Patients

When symptoms are predominantly localized to the urinary tract, a urine specimen is the preferred sample type for pathogen detection. It is important to note that HealthTrack molecular testing is less prone to sample contamination due to the sample media present in the collection tube. This means contamination is less likely to impact results regardless if you choose to do a clean or dirty catch. If symptoms are predominantly associated with the genital tract, a vaginal swab is the preferred type for accurate pathogen detection.

Male Patients

Whether testing for a UTI or STI, the first 10-15mLs of urine is sufficient to detect both infection types.

These are recommendations only. Providers should always use their best clinical judgement.

1. Kaplan, D., Yates, J., Takacs, E., Badalato, G., & Kaufmann, M. (2020, April). Medical Student Curriculum: Adult UTI. American Urological Association. <https://www.auanet.org/meetings-and-education/for-medical-students/medical-students-curriculum/adult-uti>



Getting People Healthier Faster.
HealthTrackRx.com



Customer Care: 866-287-3218
client.relations@HealthTrackRx.com